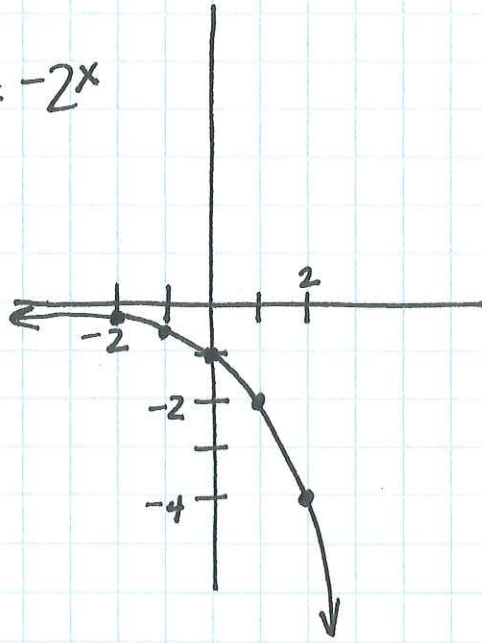


pg. 708 # 11-17 odd, 19-21 all

11)

x	y
-2	-0.25
-1	-0.5
0	-1
1	-2
2	-4

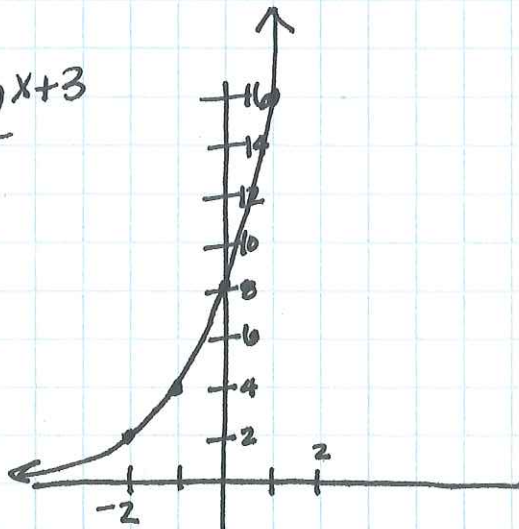
$$y = -2^x$$



13)

x	y
-2	2
-1	4
0	8
1	16
2	32

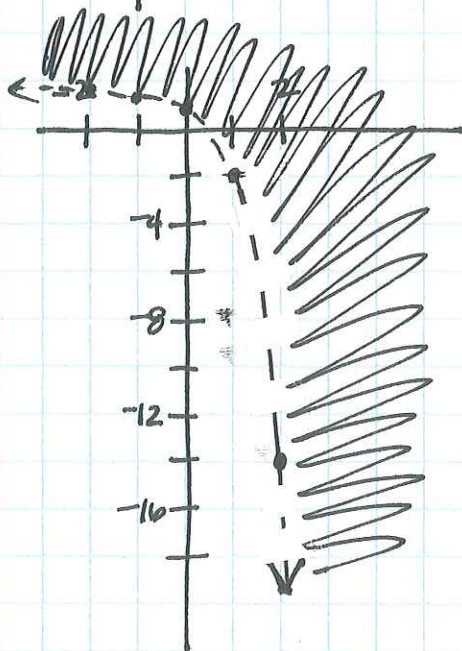
$$y = 2^{x+3}$$



15)

x	y
-2	1.9375
-1	1.75
0	1
1	-2
2	-14

$$y > -4^x + 2$$



Test point: (0, 0)

$$0 > -4^0 + 2$$

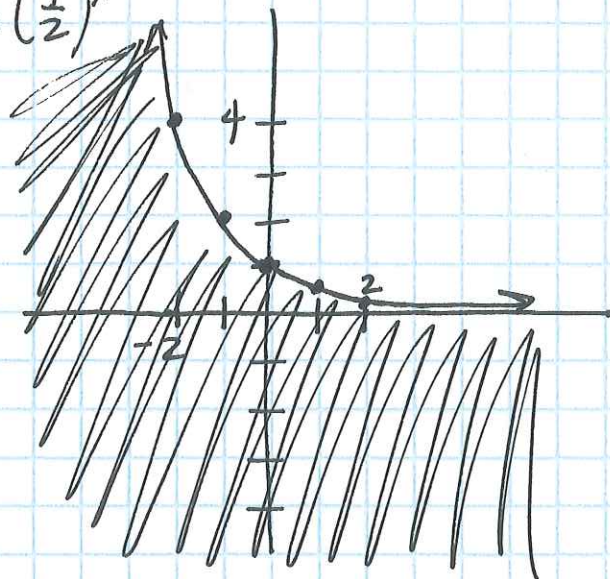
$$0 > -1 + 2$$

$$0 > 1$$

17)

x	y
-2	4
-1	2
0	1
1	$\frac{1}{2}$
2	$\frac{1}{4}$

$$y \leq \left(\frac{1}{2}\right)^x$$



Test point: $(0, 0)$

$$0 \leq \frac{1}{2}^0$$

$$0 \leq 1 \quad \checkmark$$

19) $y = 0.01^x$

x	y
-2	10000
-1	100
0	1

(B)

20) $y = 5^{-x}$

x	y
-2	25
-1	5
0	1

(C)

21) $y = 7^{1-x}$

(A) (because y-int is 7)
 $7^{1-0} = 7$