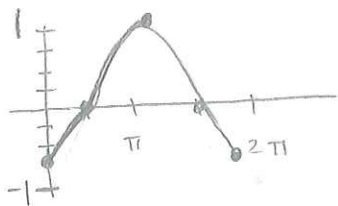


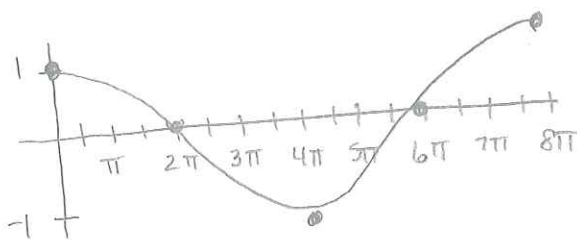
18. $\frac{3}{4}$

$y = -\frac{3}{4} \cos \theta$
period = 2π



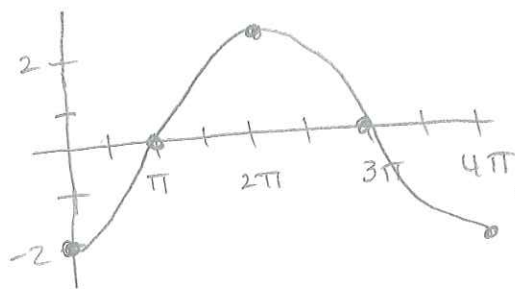
21. 8π

$y = \cos \frac{\theta}{4}$
period = 8π



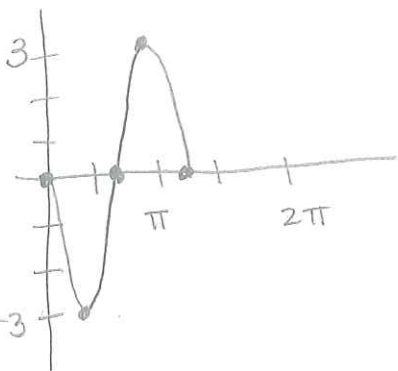
24. $2; 4\pi$

$y = -2 \cos 0.5\theta$



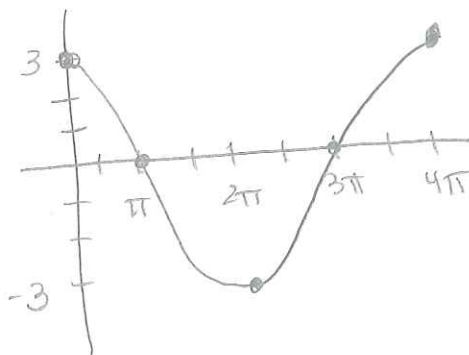
27. $3, 4$

$y = -3 \sin \frac{\pi}{2} \theta$



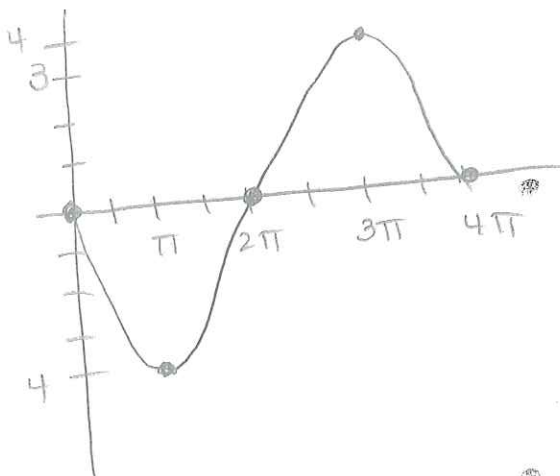
30. $3, 4\pi$

$y = 3 \cos 0.5\theta$



33. $4, 4\pi$

$y = -4 \sin \frac{\theta}{2}$



36. $y = \pm 0.4 \sin \frac{\theta}{5}$

39. $y = \pm 0.34 \sin \frac{8}{3} \theta$

42. $y = \pm 5 \cos \theta$

45. $y = \pm 0.5 \cos \frac{20}{3} \theta$

48. $y = \pm 1.5 \sin 4\theta, y = \pm 1.5 \cos 4\theta$

51. $y = 2 \cos \frac{\theta}{2}$